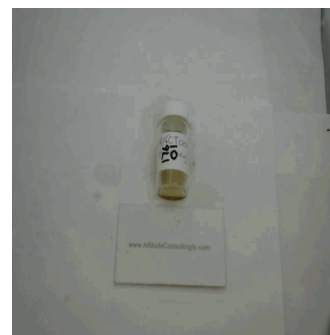




Customer: **Ambary Gardens, LLC**  
 Address: **15000 W 6th Ave 104  
 Golden, CO 80401**  
 Sample ID: **Ambary Focus AFCT001-500**  
 Matrix: **Tincture**  
 Labnumber: **21A0176-01**



Density (g/mL): 0.9542

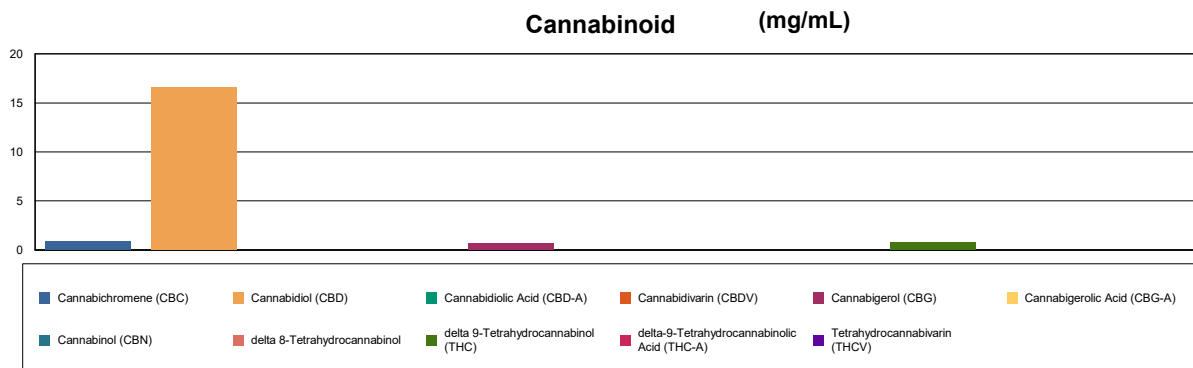
## Cannabinoid Profile

Test Conditions: 20°C  
 Extraction Technician: SH  
 Analytical Chemist: SH

Extraction Date(s)	Analysis Date(s)
1/8/2021	1/9/2021

Cannabinoids (HPLC)		Results	
	LOD (mg/mL)	%	mg/mL
Cannabidivarin (CBDV)	<0.20		
Cannabidiolic Acid (CBD-A)	<0.20		
Cannabigerolic Acid (CBG-A)	<0.20		
Cannabigerol (CBG)		0.06	0.646
Cannabidiol (CBD)		1.66	16.6
Tetrahydrocannabivarin (THCV)	<0.20		
Cannabinol (CBN)	<0.20		
delta 9-Tetrahydrocannabinol (THC)		0.08	0.797
delta 8-Tetrahydrocannabinol	<0.20		
Cannabichromene (CBC)		0.09	0.889
delta-9-Tetrahydrocannabinolic Acid (THC-A)	<0.20		
Cannabinoids Total		%	mg/mL
Max Active THC		0.08	0.80
Max Active CBD		1.66	16.60
T.Active Cannabinoids		1.89	18.90
Total Cannabinoids		1.89	18.90

Following USDA guidelines on uncertainty, Altitude Consulting's uncertainty is calculated to be +/- 2% for all cannabinoids using a coverage factor of 2 (95% confidence interval). Measurement uncertainty has not been factored into reported values.



**Gary Brook - Laboratory Director - 1/10/2021**

Reporting Limits will vary based on sample extraction weight used for the analysis.

Altitude Consulting, LLC utilizes NIST traceable Reference Standards and Certified Reference Material to calibrate analytical instruments along with proven analytical methods. The methods are applied in the most ethical manner following good laboratory practice guidelines. The results of this report are based solely on the sample submitted and cannot be reproduced. Decision Rule: Measurement uncertainty is not accounted for in the reported values. Results are based solely on calculated numbers. Altitude Consulting makes no Statements of conformity.